



## ENW 107 (students)

Last update: Sep 15, 2009 | URL: http://pccc.libguides.com/enw107\_students | [Print Guide](#) | [RSS Updates](#) | [SHARE](#)

- Home/HOMEWORK
- OnLine lab
- Links
- Fun stuff
- Writing Resources
- TESTING
- GRAMMAR SUPPLEMENTS
- E-tutoring
- Cause/Effect Essay Format
- Articles & Cheat Sheets

**Old homework** | [Comments \(0\)](#) | [Print Page](#) | Search | [Guides](#) | [Go](#)

### HW

#### **HOMEWORK DUE on TUESDAY, Sept. 15th**

**Remember the pros/cons list that we created in class? I'd like you to expand that list (use a 2nd page in your notebook).**

- 1) Using the articles below (and others of your choice if you'd like), find more information (beyond what we discussed in class) to add to the Pros and Cons sides of the chart you made.
- 2) At the same time, find 5 statistics (numbers and/or percentages) re: marijuana that you think would be useful in an essay (either side of the argument is fine.).
- 3) Be prepared to have a debate in our next class. You won't just make claims; you'll need to defend them AND attack the other side. In order to do this well, imagine how the other side would attack a point you're making...be ready to defend it.

#### **Articles**

- [Basic info/statistics re: marijuana](#)
- [10 pros/cons re: medical marijuana](#)
- [Medical marijuana issues in California](#)

#### **HOMEWORK DUE on THURSDAY, Sept. 10th**

Using **both** of the articles found below, answer the questions that follow.

#### **Articles:**

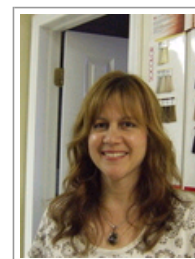
- [Cannibis in the Clinic](#)
- [Evil Weed or Useful Drug?](#)

#### **Questions:**

1. Was marijuana for medicinal purposes ever legal in the U.S.?
2. Who can benefit from "medical marijuana"? What sort of illnesses/diseases do these people have?
3. What is the potential problem with marijuana used for medicinal purposes? What are some of the risks involved?
4. In one sentence, explain what the medical marijuana debate is about--what are the two sides of the argument?

[Comments \(0\)](#)

### Subject Guide



L. Egle, Assistant Professor, ESL

Links:  
[Profile & Guides](#)

